

# Inland Geological Society

January 2018

Newsletter of the Inland Geological Society

Volume 34 No. 1

Next Meeting:  
**Thursday**  
**January 11<sup>th</sup>**

Time:  
**Social: 6:00pm**  
**Dinner: 7:00pm**  
**Lecture: 7:45pm**

Location:  
**LSA Associates**  
**1500 Iowa Ave**  
**Suite 200**  
**Riverside, CA**  
**92507**  
**(Map on Pg. 5)**

Coming to  
Dinner?  
**Please RSVP**  
**by Monday 1/8**  
**(951) 232-0430**  
**rkolenko90@gmail.com**

## In this issue:

- January Speaker: David Knight Lynch, PhD..... 1
- Announcements ..... 2-3
- Upcoming Events/IGS Meeting Schedule ..... 4
- Current IGS Officers and Meeting Location ..... 5

## January Speaker:

**David Knight Lynch, PhD**

## **Color and Light in Nature**

### ***Abstract:***

What is a rainbow? How many are there? Why is the sky blue? Why is the setting sun red and flattened? What is a mirage? Why are there rays or spokes coming from the setting sun? What is the green flash? Can it be photographed? Why does the moon look so big on the horizon? Why do stars twinkle? What is an aurora borealis? Is it really darkest before dawn? Why are wet spots dark? What is that ring around the Sun? Why can water appear so many different colors? These and dozens of other questions about naturally occurring optical effects are explained with pictures and diagrams, along with tips on how to see and photograph them. Authors David K. Lynch and William Livingston are astronomers.

### ***Biography:***

David Knight Lynch received a B.S. in Astrophysics in 1969 from Indiana University and a Ph.D. in Astronomy in 1975 from the University of Texas in Austin. He specializes in infrared spectroscopy of comets, novae, supernovae, young stars and very old stars. Dave also works in the field of optics in nature (rainbows, mirages, etc.) and geologic mapping. Dave has held research positions at the University of Texas, Sacramento Peak Observatory, Caltech, UC/Berkeley, Hughes Research Laboratories, and The Aerospace Corporation. He has published over 200 scientific papers and 10 books. He has organized 12 international scientific meetings. Dave currently does geological research relating to southern California tectonics.



# SAVE THE DATES



## 32<sup>nd</sup> Annual

# Desert Symposium and Field Trip

Symposium: April 20-21, 2018 Zzyzx, CA  
Field Trip: April 22-23, 2018

Theme: Against the current: Mojave River from sink to source: Hydrology and structural influences along Mojave Desert drainage systems.

Share your desert research with an oral or poster presentation. We encourage students to attend and compete for the **Adams Best Student Presentation Award.**

Abstract deadline (for all presentations):	20 Jan 2018
Final Paper submission deadline:	20 Feb 2018
Registration deadline:	10 Apr 2018

The field trip will camp at Owl Canyon Sunday night (Apr 22). A third-day informal trip will be held in the Barstow area.



For more information please visit  
[DesertSymposium.org](http://DesertSymposium.org)



The 2018 Desert Symposium is being held in cooperation with the Desert Studies Center, California State University, Fullerton.

## !! CALL FOR PAPERS!!

### 32<sup>nd</sup> Annual Desert Symposium

Note submittal deadlines in Symposium flyer (this page).

Please review "Information for Authors" on the DS website ([www.desertsymposium.org](http://www.desertsymposium.org)). An example of manuscript style can be seen in the 2016 Symposium volume at <http://nsm.fullerton.edu/dsc/desert-studies-center-additional-information>.

## Student Scholarship, Grant and Internship Opportunities

Many professional organizations offer funding opportunities to students including travel grants to meetings, scholarships and grants for education or research, and employment internships. While scholarships are generally open only to members of the awarding organization, some organizations have free student memberships and a few do not require membership. Check all requirements carefully!

Several upcoming scholarship, grant and internship opportunities are listed below, but many more are available.

Several scholarship and internship announcements have been posted on the **Southern California Earthquake Center (SCEC)** website. For additional information, go to <https://www.scec.org/> and click the link for Announcements.

**The Geological Society of America (GSA)** has undergraduate and graduate grants and scholarships available with submittal dates beginning December 1st. For additional information, go to [www.geosociety.org](http://www.geosociety.org); select Education & Careers, Grants & Scholarships.

**The American Geosciences Institute (AGI)** has scholarships and internships available. For additional information, go to [www.americangeosciences.org](http://www.americangeosciences.org); select Programs, Workforce, For Students.

**The Association of Environmental and Engineering Geologists (AEG)** offers various scholarships and awards with application deadlines of February 1st. For additional information, go to [www.aegweb.org](http://www.aegweb.org); select Students/Educators, Scholarships/Grants.

**The American Institute of Professional Geologists (AIPG)** offers student scholarship awards. For additional information, go to [www.aipg.org](http://www.aipg.org); select Students, Student Resources.

Look for other opportunities with professional organizations related to your field of interest.

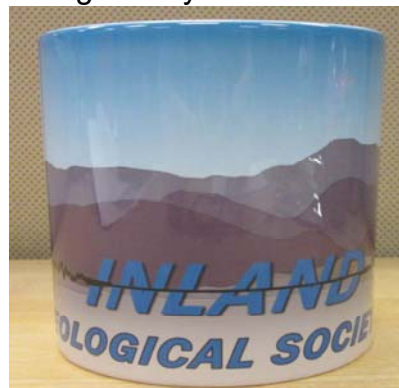
### AEG Student Chapter Grant Applications Due January 31

Are you a member of an AEG student chapter? Don't miss a chance for your student chapter to apply for one of two competitive \$250 grants to put toward chapter activities! Previous recipients were awarded the grant based on their balanced combination of applied environmental and engineering geology activities, advocacy and financial need.

Visit the Student Chapter Details page on the AEG website to download the grant application.

### Get Your IGS Coffee Mug!

IGS will now be selling IGS coffee mugs at the monthly meetings. They will be on sale for \$10.



## Upcoming Meetings/Events

### Inland Geological Society

The Inland Geological Society typically meets the first Wednesday or Thursday of each month. The February meeting will be held on Wednesday, February 7th. Dylan Terry will speak on "*Geochemical analysis of obsidians and rhyolites of the Inyo Domes.*" For more information, visit our website at [www.inlandgeo.org](http://www.inlandgeo.org).

### South Coast Geological Society



Monthly dinner meetings are typically the 1st Monday of the month. The January meeting has not been announced yet. For more information, visit the association website at [www.southcoastgeo.org](http://www.southcoastgeo.org).

### AEG—Southern California Section



The next meeting of the AEG—Southern California Section has not been announced yet. For more information, visit the association website at [www.aegsc.org](http://www.aegsc.org).

### AEG—Inland Empire Chapter



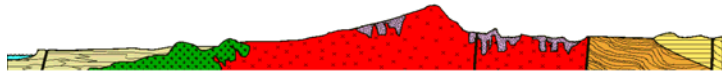
Monthly dinner meetings are typically the third Wednesday of the month at Pinnacle Peak Steakhouse, 2533 S. La Cadena Drive, Colton. The January meeting will be held on Wednesday, January 17th, at 6:30 pm. Dr. Norman Meek, Chair of the

Geography Department at CSU San Bernardino, will present "*A brief (750,000 year) history of the Mojave River.*" For more information, visit the association website at [www.aegsc.org/chapters/inlandempire](http://www.aegsc.org/chapters/inlandempire).

### Rock & Gem Shows—various locations

Various rock and mineral shows will be held throughout southern California. To find one near you, visit [www.rockngem.com](http://www.rockngem.com), then select the Show Dates tab.

### San Diego Association of Geologists



The January SDAG meeting will be held on Wed., Jan. 10th at the Marina Village Conference Center Catalina Room, San Diego. Dr. Barry Keller will speak on "*Geologic and Climate Factors Affecting Fish Speciation, Lauca River, South American Altiplano.*" For more information, visit the association website at [www.sandiegogeologists.org](http://www.sandiegogeologists.org).

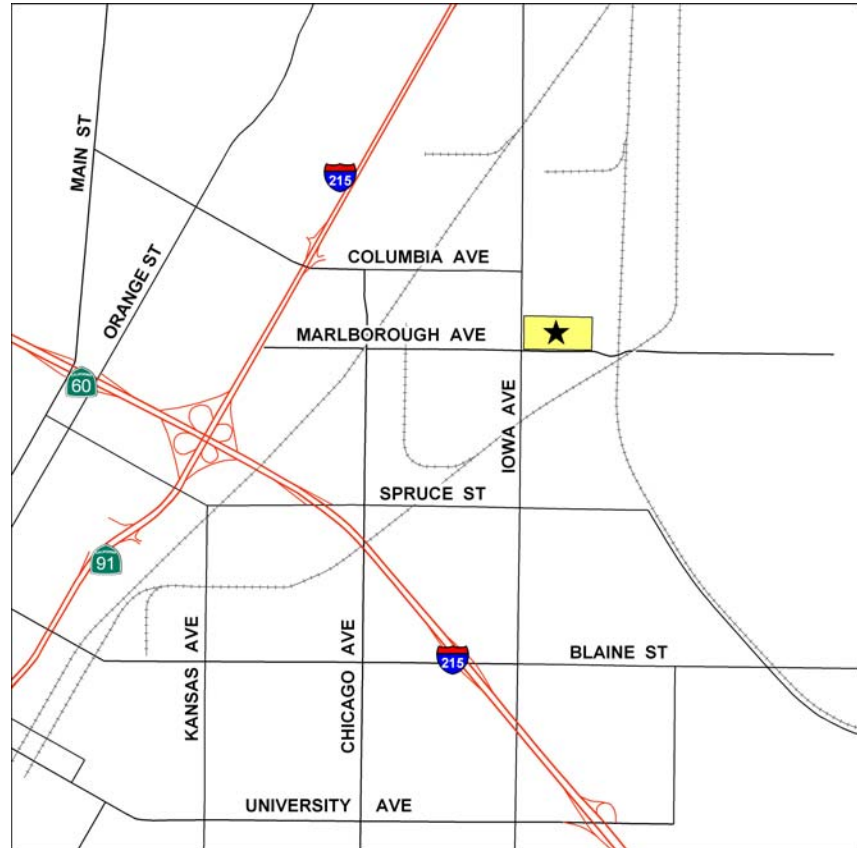
### Los Angeles Basin Geological Society



Monthly lunch meetings are typically the 4th Thursday of the month from 11:30 am to 1:00 pm at the Willow Street Conference Center, 4101 E. Willow Street, Long Beach. The next meeting of the Los Angeles Basin Geology Society has not been announced yet. For more information, visit the association website at [www.labgs.org](http://www.labgs.org).

**IGS MEETING LOCATION:**

**LSA Associates, Inc.  
1500 Iowa Ave, Suite 200  
Riverside, CA 92507**

**2016/2017 IGS OFFICERS****President**

Greg Johnson  
LA County DPW  
gjohnson@dpw.lacounty.gov  
626.458.1741

**Treasurer**

Margaret Gooding  
LSA Associates  
Margaret.gooding@LSA.net  
951.781.9310 x279

**Newsletter Editor**

Alice Orton  
Geocon West, Inc.  
orton@geoconinc.com  
951.401.3949

**Co-Vice President**

Jeff Fitzsimmons  
Lahontan RWQCB  
geojeff08@att.net  
951.212.5018

**Secretary**

Rachel Kolenko  
rkolenko90@gmail.com  
951.232.0430

**Web Master**

Scott Orton  
Consultant  
scottorton@hotmail.com  
951.505.6547

**Co-Vice President**

Debbie Kunath  
Consulting Geologist  
Debbie\_Kunath@ymail.com  
760.885.0232

**Membership Chairman**

Kirby Roucher  
Independent Contractor  
inlandgeologicalsociety@gmail.com  
951.522.5318