

Inland Geological Society

March 2016

Newsletter of the Inland Geological Society

Volume 32 No. 3

Thursday,
March 3rd

Time:

Social: 6:00pm
Dinner: 7:00pm
Lecture: 7:30pm

Location:

LSA Associates
1500 Iowa Ave
Suite 200
Riverside, CA
92507

(Map on Pg. 4)

Coming to

Dinner?

Please RSVP:

By Tuesday 3/1
(909) 227-7704

Baircrystal@ca.rr.com

In this Issue:

- Speakers – Dr. David Birman and Mr. Steve Mains 1-2
- Upcoming Events/IGS Meeting Schedule 3
- Current IGS Officers 4
- LSA MEETING LOCATION MAP 4

March Speakers:

Dr. David Birman, **Physician and GSi-water**

Mr. Steve Mains, **Watermaster Support Services**

Using Low Temperature Thermal Surveys to Identify Groundwater Movement

Abstract

Geothermal Surveys, Inc., dba GSi-water, is a geological-geophysical company that has specialized in ground water resource exploration, well location and design, environmental hydrological monitoring, dam and landfill leak detection, and other applications having to do with subsurface fluid movement for nearly sixty years.

We use geology and various geophysical techniques to help us solve complex ground water questions. One of these methods was developed by the company. We pioneered the use of temperature as a tracer of moving fluids in the subsurface.

The company has worked throughout the United States and abroad, with most of the company's work being done within the western U.S. GSi-water has spent many decades working in and around the Inland Empire and nearby regions for various companies including municipalities, water companies, mining operations, and waste companies.

Biographies:

Dr. David N. Birman is the eldest son of Joseph H. "Joe" Birman, Ph. D., who successfully pioneered the use of shallow subsurface temperature measurement to

(Continued on page 2)

(Continued from page 1)

locate, analyze and quantify the behavior of water and other fluids beneath the earth's surface. That technique and the methodology invented by Dr. Birman became an important but unrecognized geophysical tool in all aspects of the groundwater industry across nearly 60 years.

Both of Joe's sons found their father's work fascinating, and they took every opportunity to learn the family business, as children of successful people often do. Through childhood, adolescence, and young adulthood, David and Dan became proficient with the field tasks to be given greater and greater project responsibilities. Consequently they have had an unusual foundation in the use of their father's successful groundwater resources development and management program.

Following graduation from high school, David planned to follow in his father's footsteps. However, those plans were changed because of his experience during his service as a Hospital Corpsman in the United States Air Force. David chose to pursue a career as a physician. Nevertheless, he maintains an active interest in the work his father began sixty years ago. David used his hard-earned knowledge of his father's methodology, which allowed him to identify an overlooked opportunity in groundwater resources. That project is on its way to being a supplementary water resource at a critical time.

Mr. Steve Mains is a Founding Member and Honorary Member of the Inland Geological Society and it appears, Membership Chair for Life.

He first met Dr. Joe Birman, the developer of this thermal techniques, in the 1970's when Joe needed access to local wells. He enjoyed a long term professional relationship with Dr. Joe, including having him speak to the IGS several times.

Steve has worked for more than forty years in hydrology in the Upper Santa Ana River Watershed, and many of our members have contacted him through water data. Steve claims to be the first hydrologist to graduate under Dr. Prem Saint at California State University, Fullerton.

Now being semi-retired, Steve is teaming with Joe's son's to reintroduce the thermal survey's to our geotechnical community.

RIMS Science and Engineering Fair—Judges Needed

RIMS Science and Engineering Fair is coming up on Tuesday April 5th (of course this is also in the middle of the GSA Ontario meeting).

For anyone who could be free that day, the IGS has fielded a large enough judging team that we covered the geological science division with professionals (this does include our University students).

Science fair will be held at a new locations, the
Bourns Technology Center
1200 Columbia Avenue, Riverside
two blocks north of our monthly meeting site at LSA in Riverside!

If you can help judge, please contact me asap watermains@aol.com.

Upcoming Meetings/Events

Rock & Gem Shows—Various locations

Various rock and mineral shows will be throughout So. California. To find one near you, visit www.rockngem.com/showdates.asp

AEG—So. California Chapter Meeting



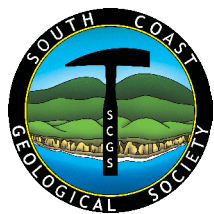
The next meeting info has not been announced. For more info., visit the So. California Chapter at www.aegsc.org/calendar/.

AEG—Inland Empire Section Meeting



Dr. David Oglesby, Chair of the Dept of Earth Sciences at UCR, will be giving a talk on "Dynamic Models of an Earthquake and Tsunami Offshore Ventura, California" on Wednesday, March 16, 2016. For more info., visit www.aegsc.org/chapters/inlandempire/.

South Coast Geological Society Meeting



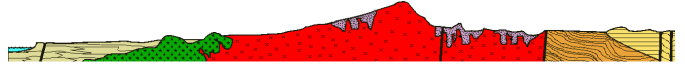
Dr. Lora Stevens, CSU Long Beach professor, will be giving a talk on "Apocalypse When? Typhoons, War and Catastrophic Flooding in Central Vietnam" on Monday, March 7, 2016. For more info., please visit SCGS on Facebook and/or www.southcoastgeo.org.

Los Angeles Basin Geological Society



LABGS has not posted their February meeting; however, it's generally the 4th Thursday of each month. Visit their website for more info. (www.labgs.org).

San Diego Assoc. of Geologists Meeting



Ms. Diana Lindsey will be giving a talk on "The Geology of Africa" on Wednesday, March 16, 2016. For more info, visit their website at www.sandiegogeologists.org.

Student Presentations: Format and Deadlines

Students who wish to give a poster and/or oral presentation of their projects must submit a biography and abstract by the 10th of the month prior to the month of presentation.

Abstracts and biographies must be in the following format:

- Limit biography and abstract to 500 words or less each.
- Formats must be in arial font, 11 point and submitted as a word (.doc), text (.txt) or PDF (.pdf) document only.

All presentations should be limited to 7 to 10 minutes in length followed by 5 minutes for questions and answers.

IGS Meeting Schedule

April 13, 2016 (Wednesday)
Mr. Todd Battey, PG, Engineering Geologist,
Lahontan Regional Water Quality Control Board
*Biological Hazards Relevant to Field Work in
Southern California*

May 2, 2016 (Tuesday)
Joint Meeting with CSUSB, IGS, AEG and SME
TBD

IGS MEETING LOCATION:

LSA Associates, Inc.
1500 Iowa Ave, Suite 200
Riverside, CA 92507

**2016 IGS OFFICERS**

Co-President
Greg Johnson, LADPW
gjohnson@dpw.lacounty.gov
626.458.1741

Co-President
Rob Johnson, AMEC
rob.b.johnson@amec.com
951.369.8060

Co-Vice President
Jeff Fitzsimmons, Lahontan RWQCB
geojeff08@att.net
951.212.5018

Co-Vice President
Debbie Kunath, Consulting Geologist
Debbie_Kunath@ymail.com
760.885.0232

Treasurer
Margaret Gooding, LSA Associates
Margaret.gooding@LSA.net
951.781.9310 x279

Secretary
Crystal Bair, Student at CSUSB
Baircrystal@ca.rr.com
909.227.7704

Membership
Steven E. Mains, Watermaster
Support Services
watermains@aol.com
951.780.5636

Newsletter Editor
Shelby Barker, AECOM
shelby.barker@aecom.com
760.680.0389

Web Mistress
Marina West, Bighorn Desert View
Water Agency
wells.out.west@gmail.com
760.910.3264

Web Master
Ernie Roumelis, AKW Geotechnical
eroumelis@verizon.net
951.265.9849