

Inland Geological Society

January 2016

Newsletter of the Inland Geological Society

Volume 32 No. 1

Thursday,
January 7th

Time:

Social: 6:00pm
Dinner: 7:00pm
Lecture: 7:30pm

Location:

LSA Associates
1500 Iowa Ave
Suite 200
Riverside, CA
92507

(Map on Pg. 4)

Coming to
Dinner?

Please RSVP:
By Monday 1/4
(909) 227-7704
Baircrystal@ca.rr.com

In this Issue:

- Speaker – Dr. Norman Meek 1-2
- Upcoming Events/IGS Meeting Schedule..... 3
- Current IGS Officers 4
- **LSA MEETING LOCATION MAP** 4

January Speaker:

Dr. Norman Meek

Professor and Chair, Department of Geography, CSU San Bernardino

Evidence for Middle Pleistocene Surface Uplift of the Northern Cady Mountains *and* Possible Origin of the Myth that California is Falling Into the Ocean

Abstract

Dr. Norman Meek has decided to present two of his recent desert symposium presentations at one IGS meeting. The first "Evidence for Middle Pleistocene Surface Uplift of the Northern Cady Mountains" focuses on stratigraphic evidence that the northern Cady Mountains have shifted laterally 5.2 km since the Miocene, and then rose in elevation over a hundred meters since the Middle Pleistocene in the Afton Canyon region.

The second presentation is titled "Possible Origin of the Myth that California is Falling Into the Ocean." It is a humorous look at Meek's search for the myth's origins. There is both a reasonable historical origin for the myth, as well as a secondary modern origin that started amid the 1960s protests. The latter has now ballooned into movies and the

(Continued on page 2)

(Continued from page 1)

widespread public belief of the myth, yet its historical origins may very well have arose from the best scientific knowledge of the time.

Biography:

Dr. Norman Meek has been a professor of Geography and Environmental Studies at CSU San Bernardino for 27 years. For the past five years he has been the department chair. He has a bachelor's degree from the University of Kansas in geography and geology, a M.A. degree from Michigan State in geography and a Ph.D. from UCLA (1990) in geography. He is best known for his studies of Lake Manix and Afton Canyon, and for promoting the overflow model for initial Grand Canyon evolution. He lives at the top of Cajon Pass with his wife and dog, waiting for Pacific-plate California to fall into the ocean so he'll have a fantastic beachfront view of the ocean.

Employment Opportunities

County of Los Angeles is now accepting applications for the following positions:

ENGINEERING GEOLOGIST
ENGINEERING GEOLOGY ASSISTANT

To view the full job posting for any opening at County of Los Angeles, visit:

<http://agency.governmentjobs.com/lacounty/default.cfm>

Click on a job title to view the complete job posting of any position listed. After you have reviewed the job posting, you can apply for the position by clicking on the "Apply" button and completing the online application.

The State of California is now accepting applications for the following positions:

ENVIRONMENTAL SCIENTIST
Department of Public Health, Glendale, CA
Department of Toxic Substance Control, Office of Criminal Investigation, Chatsworth, CA

To view the full job posting for any opening for the State of California, visit:

<http://jobs.ca.gov>

Request for Assistance and Resources

Ms. Shelby Barker will be teaching the Field Methods of Hydrogeology course in CSU San Bernardino's Geology Department. The course meets mid-January through March on Friday's from 10 AM to 5:50 PM. She would like to take the student's to observe field activities such as drilling operations (form a safe distance), groundwater treatment and/or remediation facilities, etc. She is also interested in having speakers present to the students. Please contact Ms. Barker by cell at 760-680-0389 or by email at Shelby.Barker@acom.com if you have any opportunities available for this course.

Upcoming Meetings/Events

Rock & Gem Shows—Various locations

Various rock and mineral shows will be throughout So. California. To find one near you, visit www.rockngem.com/showdates.asp

AEG—So. California Chapter Meeting



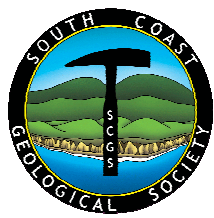
The next meeting info has not been announced. For more info., visit the So. California Chapter at www.aegsc.org/calendar/.

AEG—Inland Empire Section Meeting



Dr. Peter Robinson, Technical/Management Advisor at Gregg Drilling and Testing, Inc in Signal Hill, CA, will be giving a talk on "An Introduction to the CPT for Geotechnical and Geoenvironmental Applications" on **Wednesday, January 20, 2016**. For more info., visit www.aegsc.org/chapters/inlandempire/.

South Coast Geological Society Meeting



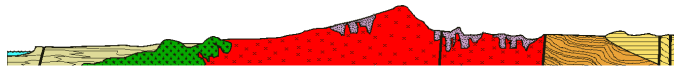
Mr. Jeff Miller, PG, will be giving a talk on "Geologic Highlights and Scientific Literacy" on **Tuesday, January 12, 2016**. For more info., please visit SCGS on Facebook and/or www.southcoastgeo.org.

Los Angeles Basin Geological Society



LABGS has not posted their November meeting; however, it's generally the 4th Thursday of each month. Visit their website for more info. (www.labgs.org).

San Diego Assoc. of Geologists Meeting



The SDAG January meeting will be held on **Wednesday, January 27, 2016**. For more info, visit www.sandiegoogeologists.org.

San Diego Assoc. of Geologists Meeting



Mr. Keith Meldahl will be giving a talk on "Surf, Sand and Stone; How Waves, Earthquakes and Other Forces Shape the Southern California Coast" at the February meeting. For more info, visit www.sandiegoogeologists.org.

AEG—Inland Empire Section Meeting



Dr. Sally McGill, Professor and Chair of the Department of Geological Sciences, CSU San Bernardino, will be giving a talk on the "Distribution of Fault Slip Across the Pacific-North America Plate Boundary in Southern California: Recent Results from Geologic and Geodetic Studies" on **Wednesday, February 17, 2016**. For more info., visit www.aegsc.org/chapters/inlandempire/

IGS Meeting Schedule

February 3, 2016 (Wednesday)

Mr. Omar Pacheco, Engineering Geologist, Lahontan Regional Water Quality Control Board
TBD

March 3, 2016 (Thursday)

TBD

IGS MEETING LOCATION:

**LSA Associates, Inc.
1500 Iowa Ave, Suite 200
Riverside, CA 92507**

**2016 IGS OFFICERS****Co-President**

Greg Johnson, LADPW
gjohnson@dpw.lacounty.gov
626.458.1741

Co-President

Rob Johnson, AMEC
rob.b.johnson@amec.com
951.369.8060

Co-Vice President

Jeff Fitzsimmons, Lahontan RWQCB
geojeff08@att.net
951.212.5018

Co-Vice President

Debbie Kunath, Consulting Geologist
Debbie_Kunath@ymail.com
760.885.0232

Treasurer

Margaret Gooding, LSA Associates
Margaret.gooding@lsa-assoc.com
951.781.9310 x279

Secretary

Crystal Bair, Student at CSUSB
Baircrystal@ca.rr.com
909.227.7704

Membership

Steven E. Mains, Watermaster
Support Services
watermains@aol.com
951.780.5636

Newsletter Editor

Shelby Barker, AECOM
shelby.barker@aecom.com
760.680.0389

Web Mistress

Marina West, Bighorn Desert View
Water Agency
wells.out.west@gmail.com
760.910.3264

Web Master

Ernie Roumelis, AKW Geotechnical
eroumelis@verizon.net
951.265.9849