

Inland Geological Society

February 2016

Newsletter of the Inland Geological Society

Volume 32 No. 2

Wednesday,
February 3rd

Time:

Social: 6:00pm
Dinner: 7:00pm
Lecture: 7:30pm

Location:

LSA Associates
1500 Iowa Ave
Suite 200
Riverside, CA
92507

(Map on Pg. 4)

Coming to
Dinner?

Please RSVP:

By Monday 2/1
(909) 227-7704
Baircrystal@ca.rr.com

In this Issue:

- Speaker – Mr. Omar Pacheco 1-2
- Upcoming Events/IGS Meeting Schedule..... 3
- Current IGS Officers 4
- **LSA MEETING LOCATION MAP** 4

February Speaker:

Mr. Omar Pacheco, PG

Engineering Geologist, Regional Water Quality Control Board, Lahontan Region

An Overview of the State Policy that Establishes Policies and Procedures for Investigation and Cleanup and Abatement of Discharges: State Water Resources Control Board Resolution No. 92-49

Abstract

Resolution No. 92-49 establishes the policy that dischargers are required to cleanup and abate the effects of discharges in a manner that promotes attainment of either background water quality or the best water quality, which is reasonable if background levels of water quality cannot be restored. The Resolution also establishes the basis for determining cleanup levels of water of the State and soils that impact water of the State.

Biography:

Mr. Omar Pacheco has been an Engineering Geologist with California Regional Water Quality Control Board, Lahontan Region for eight years. For the past six years, he has been the remedial program manager for the ongoing investigation and cleanup occurring at Naval Air Weapons Station, China Lake. He has a bachelor's degree in geology from California State University, San Bernardino. He lives in Apple Valley for the clean water and air. On a regular basis, he attends symposiums at the local taverns.

RIMS Science and Engineering Fair—Judges Needed

RIMS Science and Engineering Fair is coming up on Tuesday April 5th (of course this is also in the middle of the GSA Ontario meeting).

For anyone who could be free that day, the IGS has fielded a large enough judging team that we covered the geological science division with professionals (this does include our University students).

Science fair will be held at a new locations, the
Bourns Technology Center
1200 Columbia Avenue, Riverside
two blocks north of our monthly meeting site at LSA in Riverside!

If you can help judge, please contact me asap watermains@aol.com.

Frank's Back!

Prior to our evening lecture, please join us as we welcome our past IGS Treasurer and Secretary, Frank Jordan back to the Southland. Having served a stint in the Golden Empire with the State of California in the Bakersfield office of the Division of Oil, Gas, & Geothermal Resources, Frank has returned to the Inland Empire as San Bernardino County's newest Engineering Geologist! We will have a "Meet & Greet" reception during dinner, so plan on coming early!

Student Presentations: Format and Deadlines

Students who wish to give a poster and/or oral presentation of their projects must submit a biography and abstract by the 10th of the month prior to the month of presentation.

Abstracts and biographies must be in the following format:

- a. Limit biography and abstract to 500 words or less each.
- b. Formats must be in arial font, 11 point and submitted as a word (.doc), text (.txt) or PDF (.pdf) document only.

All presentations should be limited to 7 to 10 minutes in length followed by 5 minutes for questions and answers. Please submit your information to Jeff Fitzsimmons at geojeff08@att.net.

Upcoming Meetings/Events

Rock & Gem Shows—Various locations

Various rock and mineral shows will be throughout So. California. To find one near you, visit www.rockngem.com/showdates.asp

AEG—So. California Chapter Meeting



The next meeting info has not been announced. For more info., visit the So. California Chapter at www.aegsc.org/calendar/.

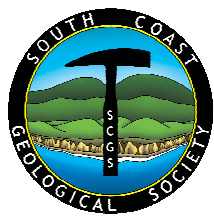
AEG—Inland Empire Section Meeting



Dr. Sally McGill, Chair of the Dept of Geological Sciences at CSUSB, will be giving a talk on "Distribution of fault slip across the Pacific-North American plate boundary in southern California:

Recent results from geologic and geodetic studies" on **Wednesday, February 17, 2016**. For more info., visit www.aegsc.org/chapters/inlandempire/.

South Coast Geological Society Meeting



Dr. Phil Armstrong, CSU Fullerton professor, will be giving a talk on "Sierra Nevada-Owens Valley Frontal Fault Zone Transition and Published Horizontal

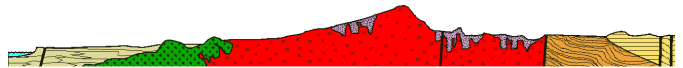
Extension Rates" on **Monday, February 1, 2016**. For more info., please visit SCGS on Facebook and/or www.southcoastgeo.org.

Los Angeles Basin Geological Society



LABGS has not posted their February meeting; however, it's generally the 4th Thursday of each month. Visit their website for more info. (www.labgs.org).

San Diego Assoc. of Geologists Meeting



Mr. Keith Meldahl will be giving a talk on "Surf, Sand and Stone; How Waves, Earthquakes and Other Forces Shape the Southern California Coast" on **Wednesday, February 17, 2016**. For more info, visit their website at www.sandiegogeologists.org.

San Diego Assoc. of Geologists Meeting



Ms. Diana Lindsey will be giving a talk on "The Geology of Africa" on **Wednesday, March 16, 2016**. For more info, visit their website at www.sandiegogeologists.org.

IGS Meeting Schedule

March 3, 2016 (Thursday)

Dr. David Birman & Mr. Daniel Birman, GSI Water Inc. and Mr. Steve Mains, Watermaster Support Service
Use of Low-Temperature Geothermal Surveys to Map Active Groundwater Flow

April 2016 (TBD)

Joint Meeting with CSUSB, IGS, AEG and SME
TBD

May 5, 2016 (Thursday)

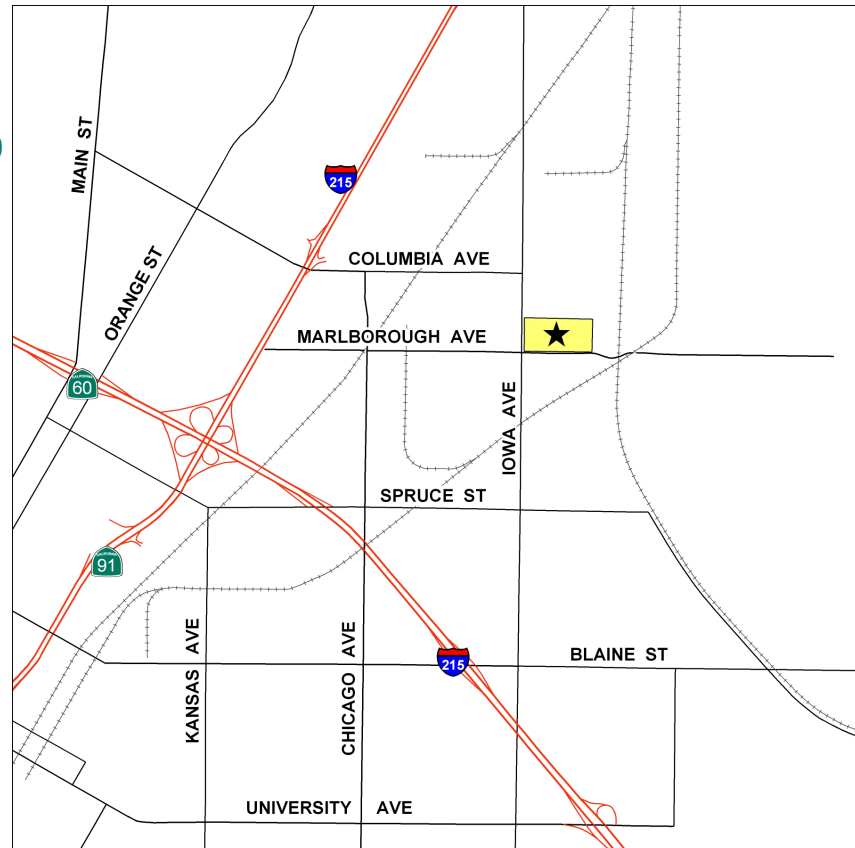
Mr. Todd Battey, PG, Engineering Geologist, Lahontan Regional Water Quality Control Board
Biological Hazards Relevant to Field Work in Southern California

June 1, 2016 (Wednesday)

Ms. Marina West, Bighorn-Desert View Water Agency
A Poor Judgment Can Lead to Better Judgment

IGS MEETING LOCATION:

LSA Associates, Inc.
1500 Iowa Ave, Suite 200
Riverside, CA 92507

**2016 IGS OFFICERS****Co-President**

Greg Johnson, LADPW
 gjohnson@dpw.lacounty.gov
 626.458.1741

Co-President

Rob Johnson, AMEC
 rob.b.johnson@amec.com
 951.369.8060

Co-Vice President

Jeff Fitzsimmons, Lahontan RWQCB
 geojeff08@att.net
 951.212.5018

Co-Vice President

Debbie Kunath, Consulting Geologist
 Debbie_Kunath@ymail.com
 760.885.0232

Treasurer

Margaret Gooding, LSA Associates
 Margaret.gooding@lsa-assoc.com
 951.781.9310 x279

Secretary

Crystal Bair, Student at CSUSB
 Baircrystal@ca.rr.com
 909.227.7704

Membership

Steven E. Mains, Watermaster
 Support Services
 watermains@aol.com
 951.780.5636

Newsletter Editor

Shelby Barker, AECOM
 shelby.barker@aecom.com
 760.680.0389

Web Mistress

Marina West, Bighorn Desert View
 Water Agency
 wells.out.west@gmail.com
 760.910.3264

Web Master

Ernie Roumelis, AKW Geotechnical
 eroumelis@verizon.net
 951.265.9849