

# Inland Geological Society

September 2015

Newsletter of the Inland Geological Society

Volume 31 No. 9

Thursday,  
September 3<sup>rd</sup>

Time:

Social: 6:00pm  
Dinner: 7:00pm  
Lecture: 7:30pm

Location:

LSA Associates  
1500 Iowa Ave  
Suite 200  
Riverside, CA  
92507

(Map on Pg. 4)

Coming to  
Dinner?

Please RSVP:

By Monday 8/31  
(909) 227-7704  
Baircrystal@ca.rr.com

## **In this Issue:**

- Speaker – Dr. W. Richard Laton ..... 1-2
- Upcoming Events/IGS Meeting Schedule..... 3
- Current IGS Officers ..... 4
- **LSA MEETING LOCATION MAP** ..... 4

## **September Speaker:**

**W. Richard Laton, PhD, PG** (CA, AK, AZ, IL, IN, FL, MN, OR, PA, TX, WA),  
**CHG** (CA, WA), **CPG, EG**

Associate Professor of Hydrogeology, Geological Sciences Department, California State University, Fullerton *and*  
Principal Consultant, Hydrogeology, Earth Forensics, Inc.

## **Low Altitude Photography utilizing UAVs. – *Geologic and Hydrologic Applications***

### *Abstract*

Low altitude photography dates back to the late 1880's when photographs were taken from hot air balloons. Aerial photography has advanced throughout the years as photographs have been collected via airplanes and satellites. Recent advancements in technology, specifically UAV (unmanned aerial vehicle) technology has precipitated an increased interest in low altitude aerial photography. The UAV technology supplements an already expanding area of spatial digital data like Geographical Information System (GIS), remote sensing, and 3d visualizations. GIS is a computer based spatial data management and analysis system that provides an excellent platform to analyze the data gathered by the UAV. Remote Sensing uses imagery (satellite, aerial, kite, blimp, drones, etc.) both passive and active to collect, detect and analyze data. 3D visualization

*(Continued on page 2)*

*(Continued from page 1)*

is an advanced way for scientists to look at natural systems in multiple dimensions which allows for the exploration, analysis, and understanding of the data. This talk will focus on the uses of UAV's in a variety of geologic and hydrologic applications.

***Biography:***

Dr. Laton is an expert in the field of geology/hydrology/hydrogeology. He is currently an Associate Professor of Hydrogeology in the Department of Geological Sciences, California State University, Fullerton and the prestigious 2014 Ross Oliver award winner. This is a continuation of a career that includes years of teaching, consulting, litigation support and management experience. Dr. Laton possesses extensive knowledge in the areas of hydrogeology, soil and water contamination, hydrology and surface water, wetlands, coastal monitoring/geomorphology, field sampling techniques and well hydraulics-well design as well as environmental remote sensing/GIS. His classes at the university encompass topics including: water quality, environmental sampling, groundwater modeling, well hydraulics, oceanography, and basic geology. He enjoys introducing students to applied research and acts as the faculty advisor to a large number of upper-level students. He has also acted as a consultant for a numerous companies and agencies that need input on the above subjects as well as natural hazard assessment and mapping.

**Student Presentations:**  
**Format and Deadlines**

Students who wish to give a poster and/or oral presentation of their projects must submit a biography and abstract by the 10th of the month prior to the month of presentation.

Abstracts and biographies must be in the following format:

- a. Limit biography and abstract to 500 words or less each.
- b. Formats must be in arial font, 11 point and submitted as a word (.doc), text (.txt) or PDF (.pdf) document only.

All presentations should be limited to 7 to 10 minutes in length followed by 5 minutes for questions and answers. Please submit your information to Jeff Fitzsimmons at [geojeff08@att.net](mailto:geojeff08@att.net).

## Upcoming Meetings/Events

### Rock & Gem Shows—Various locations

Various rock and mineral shows will be throughout So. California. To find one near you, visit [www.rockngem.com/showdates.asp](http://www.rockngem.com/showdates.asp)

### AEG—So. California Chapter Meeting



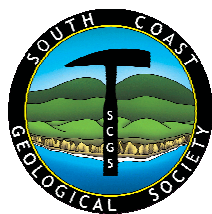
The meeting details for the next meeting for the AEG-Southern California Chapter is to be announced. For more info., visit the So. California Chapter at [www.aegsc.org/calendar/](http://www.aegsc.org/calendar/).

### AEG—Inland Empire Section Meeting



AEG—Inland Empire Section meeting information has not been announced. For more info., visit [www.aegsc.org/chapters/inlandempire/index.php](http://www.aegsc.org/chapters/inlandempire/index.php).

### South Coast Geological Society Meeting



SCGC will be having their 42nd Annual Field Trip to the southern Sierra Nevada near Kernville the weekend of **September 25 through 27, 2015**. For more info., visit

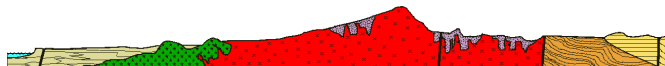
SCGS on Facebook and/or [www.southcoastgeo.org](http://www.southcoastgeo.org).

### Los Angeles Basin Geological Society



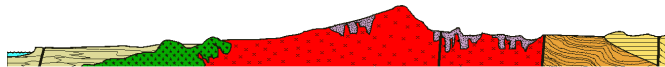
LABGS has not posted their September meeting. Visit their website for more info. ([www.labgs.org](http://www.labgs.org)).

### San Diego Assoc. of Geologists Meeting



Mark Legg will be presenting a talk on "The Continental Borderland" on **Wednesday, September 16, 2015**. For more info, visit [www.sandiegogeologists.org](http://www.sandiegogeologists.org).

### San Diego Assoc. of Geologists Meeting



Tom Rockwell will be presenting a talk on the "Coyotes Mountains" at the October meeting. For more info, visit [www.sandiegogeologists.org](http://www.sandiegogeologists.org).

### San Diego Assoc. of Geologists Field Trip



SDAG will be having a field trip to the Western Salton Trough Regional Tectonics, Coyote Mountains and Vicinity on **Nov. 6-8, 2015**. For more info, visit [www.sandiegogeologists.org](http://www.sandiegogeologists.org).

## IGS Meeting Schedule

**October 7, 2015 (Wednesday)**

*TBD*

**November 5, 2015 (Wednesday)**

*TBD*

**IGS MEETING LOCATION:**

**LSA Associates, Inc.**  
**1500 Iowa Ave, Suite 200**  
**Riverside, CA 92507**

**2015 IGS OFFICERS****Co-President**

Greg Johnson, LADPW  
 gjohnson@dpw.lacounty.gov  
 626.458.1741

**Co-Vice President**

Debbie Kunath, Consulting Geologist  
 Debbie\_Kunath@ymail.com  
 760.885.0232

**Membership**

Steven E. Mains, Watermaster  
 Support Services  
 watermains@aol.com  
 951.780.5636

**Web Master**

Ernie Roumelis, AKW Geotechnical  
 eroumelis@verizon.net  
 951.265.9849

**Co-President**

Rob Johnson, AMEC  
 rob.b.johnson@amec.com  
 951.369.8060

**Treasurer**

Margaret Gooding, LSA Associates  
 Margaret.gooding@lsa-assoc.com  
 951.781.9310 x279

**Newsletter Editor**

Shelby Barker, AECOM  
 shelby.barker@aecom.com  
 760.680.0389

**Co-Vice President**

Jeff Fitzsimmons, John R. Byerly, Inc.  
 geojeff08@att.net  
 909.877.1324

**Secretary**

Crystal Bair, Student at CSUSB  
 Baircrystal@ca.rr.com  
 909.227.7704

**Web Mistress**

Marina West, Bighorn Desert View  
 Water Agency  
 wells.out.west@gmail.com  
 760.910.3264