

# Inland Geological Society

November 2015

Newsletter of the Inland Geological Society

Volume 31 No. 11

Thursday,  
November 5<sup>th</sup>

Time:  
Social: 6:00pm  
Dinner: 7:00pm  
Lecture: 7:30pm

Location:  
LSA Associates  
1500 Iowa Ave  
Suite 200  
Riverside, CA  
92507  
(Map on Pg. 4)

Coming to  
Dinner?  
Please RSVP:  
By Monday 11/2  
(909) 227-7704  
Baircrystal@ca.rr.com

## In this Issue:

- Speaker – Ms. Laurie Racca, PG ..... 1-2
- Upcoming Events/IGS Meeting Schedule..... 3
- Current IGS Officers ..... 4
- **LSA MEETING LOCATION MAP** ..... 4

## November Speaker:

### **Ms. Laurie Racca, PG**

Senior Registrar, State of California, Board of Professional Engineers, Licensed Surveyors and Geologists

## **Understanding Licensure In California: Historical Perspective, Today's Purpose, Planning for Tomorrow**

*Abstract*

In 2009, the state legislature mandated integration of the former Geologist and Geophysicist Board with the former Board for Professional Engineers and Land Surveyors. While everyone involved at the time wasn't exactly sure how to initially proceed or of the outcome, the Board for Professional Engineers, Land Surveyors and Geologists (BPELSG) as it is known today, believes that "the result is greater than the sum of the two parts". Furthermore, the Board believes that the geology-based professions share similar challenges as the Engineers and Land Surveyors, in that all professions are faced with a paradigm shift in how the consumer and public agencies perceive these professions and how their respective practices are performed...now and into the future.

Some of the challenges that lie ahead include: untangling the maze of local jurisdictions that are confounded by the difference between a practice licensing act (such as the PG license) and a title licensing act (such as the CEG or CHG specialty licenses), keeping our licensing tests current with the state of the practice by the different licensees, and keeping our procedures and statutory obligations current too.

*(Continued on page 2)*

*(Continued from page 1)*

It is our belief that we need more frequent feedback from our licensees about these issues, as well as greater participation by our licensees for activities pursued by the Board that impact our respective futures. BPELSG is inviting you to meet the new Geology Registrar, and have a "round table discussion" regarding the future of licensing for geologists, engineering geologists, hydrogeologists and geophysicists. We look forward to collecting valuable constructive input and feedback from the membership of the Inland Geological Society.

**Biography:**

Laurie Racca, PG, is a licensed Professional Geologist with 25 years of experience specializing in complex environmental site investigations and leading multidisciplinary teams. Her experience includes working in private environmental and geotechnical consulting, providing regulatory agency oversight large military and civilian environmental cleanups for the Department of Toxic Substances Control, and investigating fraud, waste and abuse as part of the Office of Enforcement at the State Water Resources Control Board. She was appointed as the Senior Registrar for Geologists and Geophysicists by BPELSG in June 2015.



## Request for Help

- 1) 1) Three INCREDIBLE girls, all tied for first place in AP Chemistry, civil engineers, some in our engineering academy. They want to compete in science fair and their original idea just got nixed by the forestry department (Aspen grove recovery from the Lake Fire). They are interested in civil engineering and would like to do a flood control project along the Santa Ana.....great since this is an El Nino year. A project was discussed with them regarding a project a student did many years ago on arundo diverting the Santa Ana to wipe out her grandfather's house in Rubidoux. **Is it possible to get a mentor to sit down with them to discuss field technique to gather data before and after a heavy rain?** This is not a required project and has no points involved at all. Just incredible students...
- 2) **Looking for a hydrologist to coach hydrology for Science Olympiad.** The topic is on ground water and toxins. This requires 7 practices that are 45 minute in length at King High School in Riverside, November through February, from 3:00 - 3:45 pm every other Tuesday. We have three teams so this would be a small group of six INCREDIBLE students. These students would either be enrolled in AP Environment or the school's engineering academy. We have been to state four out of four years and are hoping to win Inland Empire again this year. All curriculum is found on the SciOly website. Practice tests as well.
- 3) **Looking for a coach to teach geologic mapping for Science Olympiad.** Satellite photos of earth to study trends. Usually about human impact. Again, everthing is identical to #2 above. 3 teams, 45 students. These are about the best students on campus. All are STEM majors, and students tend to pick events to compete in that interest them.

## Upcoming Meetings/Events

### Rock & Gem Shows—Various locations

Various rock and mineral shows will be throughout So. California. To find one near you, visit [www.rockngem.com/showdates.asp](http://www.rockngem.com/showdates.asp)

### AEG—So. California Chapter Meeting



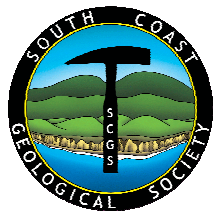
The next meeting info has not been announced. For more info., visit the So. California Chapter at [www.aegsc.org/calendar/](http://www.aegsc.org/calendar/).

### AEG—Inland Empire Section Meeting



Dr. Norman Meek, CSUSB Geography Department Chair, will be giving a talk on "How (In)Effective is the Headward Erosion Process" on **Thursday, November 12, 2015**. For more info., visit [www.aegsc.org/chapters/inlandempire/](http://www.aegsc.org/chapters/inlandempire/).

### South Coast Geological Society Meeting



SCGC is having their Annual Poster Session on **Monday, November 9th, 2015**. For more info., visit SCGS on Facebook and/or [www.southcoastgeo.org](http://www.southcoastgeo.org).

### Los Angeles Basin Geological Society

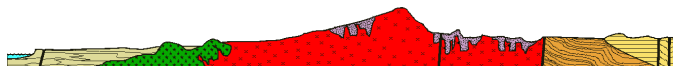


LABGS has not posted their November meeting; however, it's generally the 4th Thursday of each month. Visit their website for more info. ([www.labgs.org](http://www.labgs.org)).

### Groundwater Resources Assoc. of CA

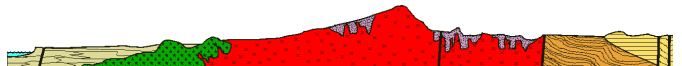
GRAC's "Naturally-Occurring Compounds of Regulatory Concern Symposium" on **November 18-19, 2015** at the Anaheim Marriott Suites in Garden Grove. Visit their website for more info ([www.grac.org](http://www.grac.org)).

### San Diego Assoc. of Geologists Meeting



Tom Rockwell will be presenting a talk on the "Coyotes Mountains" at the October meeting. For more info, visit [www.sandiegogeologists.org](http://www.sandiegogeologists.org).

### San Diego Assoc. of Geologists Field Trip



SDAG will be having a field trip to the Western Salton Trough Regional Tectonics, Coyote Mountains and Vicinity on **Nov. 6-8, 2015**. For more info, visit [www.sandiegogeologists.org](http://www.sandiegogeologists.org).

## IGS Meeting Schedule

### **December 2, 2015 (Wednesday)**

Ms. Marina West, Big Horn Water District  
*Ames/Reche Groundwater Storage and Recovery Program*

### **January 7, 2016 (Thursday)**

Dr. Norman Meek, CSUSB Department Chair,  
Geography  
*TBD*

**IGS MEETING LOCATION:**

**LSA Associates, Inc.**  
**1500 Iowa Ave, Suite 200**  
**Riverside, CA 92507**

**2015 IGS OFFICERS****Co-President**

Greg Johnson, LADPW  
 gjohnson@dpw.lacounty.gov  
 626.458.1741

**Co-President**

Rob Johnson, AMEC  
 rob.b.johnson@amec.com  
 951.369.8060

**Co-Vice President**

Jeff Fitzsimmons, Lahontan RWQCB  
 geojeff08@att.net  
 951.212.5018

**Co-Vice President**

Debbie Kunath, Consulting Geologist  
 Debbie\_Kunath@ymail.com  
 760.885.0232

**Treasurer**

Margaret Gooding, LSA Associates  
 Margaret.gooding@lsa-assoc.com  
 951.781.9310 x279

**Secretary**

Crystal Bair, Student at CSUSB  
 Baircrystal@ca.rr.com  
 909.227.7704

**Membership**

Steven E. Mains, Watermaster  
 Support Services  
 watermains@aol.com  
 951.780.5636

**Newsletter Editor**

Shelby Barker, AECOM  
 shelby.barker@aecom.com  
 760.680.0389

**Web Mistress**

Marina West, Bighorn Desert View  
 Water Agency  
 wells.out.west@gmail.com  
 760.910.3264

**Web Master**

Ernie Roumelis, AKW Geotechnical  
 eroumelis@verizon.net  
 951.265.9849