

Inland Geological Society

January 2015

Newsletter of the Inland Geological Society

Volume 31 No. 1

This Meeting:
Thursday,
January 8th

Time:
Social: 6:00pm
Dinner: 7:00pm
Lecture: 7:30pm

Location:
LSA Associates
1500 Iowa Ave
Suite 200
Riverside, CA
92507
(Map on Pg. 4)

Coming to
Dinner?
Please RSVP:
By Monday 1/5
(951) 784-2168
dixie.lass@att.net

In this Issue:

- January Speaker – Dr. Nigel Hughes 1
- Upcoming Events/IGS Meeting Schedule..... 2
- Current IGS Officers 3
- **LSA MEETING LOCATION MAP** 3

January Speaker:

Dr. Nigel Hughes

Professor of geology, University of California, Riverside, California

Mt. Everest: A Geological Biography

Abstract

Dr. Nigel Hughes is professor of geology at the University of California, Riverside, and has worked for over 25 years on the bedrocks geology of the Himalaya, including of Mt. Everest. He has a particular interest in the Cambrian of the Himalaya, and is currently completing a stratigraphic analysis of the Cambrian System of the Indian subcontinent, the geological history of Mt. Everest, and of the history of its geological investigation.

BIOGRAPHY: Dr. Hughes completed his Bachelor of Science in geology (with honors) at University of Durham (United Kingdom) and his Ph.D. in geology at the University of Bristol (United Kingdom). He has worked at several museums including a postdoctoral fellowship followed by a Research Associate position at the Smithsonian in Washington D.C. He joined the University of California, Riverside geology department as an Associate Professor in 1997 and has been a professor in the department since 2003. His research program aims, using field- and specimen-based analyses, to provide high-resolution data which addresses major questions of evolutionary mechanism in the early Phanerozoic. Other research interests include lower Paleozoic paleogeography and tectonics (particularly the early Paleozoic history of India and the peri-Gondwana region), shape restoration of deformed fossils, trace fossil paleobiology, and clastic sedimentology/stratigraphy.

Upcoming Meetings/Events

Rock & Gem Shows—Various locations

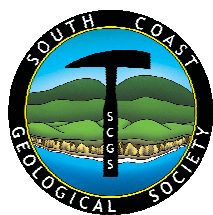
Various rock and mineral shows will be throughout So. California. To find one near you, visit www.rockngem.com/showdates.asp

AEG—So. California Chapter Meeting



The meeting details for the next meeting for the AEG-Southern California Chapter is to be announced. For more info., visit the So. California Chapter at www.aegsc.org/calendar/.

South Coast Geological Society Meeting



Mr. Matthew Kirby will be presenting a talk on "10,000 Years of Summer vs. Winter Influence on Mojave Hydroclimates where and what time?" on **Wednesday, January 12, 2015** at the

DoubleTree Club by Hilton in Santa Ana, CA. For more info., visit SCGS on Facebook and/or www.southcoastgeo.org.

AEG—Inland Empire Section



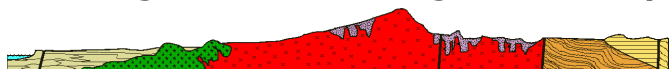
Mr. Desmond Chung will be presenting a talk on "Dirt Can Hurt: Utilizing Flexible Solutions" on **Wednesday, January 21, 2015**. For more info., visit www.aegsc.org/chapters/inlandempire/index.php.

Los Angeles Basin Geological Society



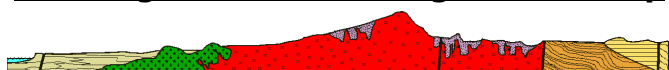
LABGS generally has their meetings on the fourth Thursday of each month. Visit their website for more info. (www.labgs.org).

San Diego Assoc. of Geologists Field Trip



Ms. Renee Deutsch will be presenting a talk on "The Impossible Landslide (Carrizo Gorge's 1932 Goat Canyon Disaster" on **Wednesday, January 21, 2015**. For more info, visit www.sandiegogeologists.org

San Diego Assoc. of Geologists Field Trip



Mr. Chuck Houser will be presenting a talk on "Calcite" on **Wednesday, February 18, 2015**. For more info, visit www.sandiegogeologists.org

Los Angeles Basin Geological Society



LABGS is calling for poster abstracts for the upcoming Groundwater Resources Association of California and LABGS joint session on **February 18-19, 2015** in Long Beach, CA. The topic will

be "Oil, Gas, and Groundwater in California: Wise Production and Protection of Our Valuable Natural Resources". Save the date! Visit their website for more info. (www.labgs.org).

IGS Meeting Schedule

February 5, 2014 (Thursday)
TBD

IGS MEETING LOCATION:

LSA Associates, Inc.
1500 Iowa Ave, Suite 200
Riverside, CA 92507

**2014 IGS OFFICERS****Co-President**

Greg Johnson, LADPW
 gjohnson@dpw.lacounty.gov
 626.458.1741

Co-President

Rob Johnson, AMEC
 rob.b.johnson@amec.com
 951.369.8060

Co-Vice President

Jeff Fitzsimmons, John R. Byerly, Inc.
 geojeff08@att.net
 909.877.1324

Co-Vice President

Debbie Kunath, Consulting Geologist
 Debbie_Kunath@ymail.com
 760.885.0232

Treasurer

Margaret Gooding, LSA Associates
 Margaret.gooding@lsa-assoc.com
 951.781.9310 x279

Secretary

Dixie Lass, Retired
 Dixie.lass@att.net
 951.784.2168

Membership

Steven E. Mains, Watermaster
 Support Services
 watermains@aol.com
 951.780.5636

Newsletter Editor

Shelby Barker, AECOM
 shelby.barker@aecom.com
 760.680.0389

Web Mistress

Marina West, Bighorn Desert View
 Water Agency
 wells.out.west@gmail.com
 760.910.3264

Web Master

Ernie Roumelis, AKW Geotechnical
 eroumelis@verizon.net
 951.265.9849