

# Inland Geological Society

February 2015

Newsletter of the Inland Geological Society

Volume 31 No. 2

**This Meeting:**  
**Wednesday,**  
**February 4<sup>th</sup>**

**Time:**  
**Social: 6:00pm**  
**Dinner: 7:00pm**  
**Lecture: 7:30pm**

**Location:**  
**LSA Associates**  
**1500 Iowa Ave**  
**Suite 200**  
**Riverside, CA**  
**92507**  
(Map on Pg. 4)

**Coming to**  
**Dinner?**  
**Please RSVP:**  
**By Monday 2/2**  
**(951) 784-2168**  
**dixie.lass@att.net**

**In this Issue:**

- Febuary Speaker – Brian Serl ..... 1-2
- Upcoming Events/IGS Meeting Schedule..... 3
- Current IGS Officers ..... 4
- **LSA MEETING LOCATION MAP** ..... 4

**February Speaker:**

**Brian Serls**  
Owner of 2R Drilling, Inc.

***2R Drilling, Inc.***

*Abstract*

Gene Serl established 2R Drilling, Inc. (2R Drilling) in 1978 as a division of 2R Engineering. He wanted his own drill rig to drill his own engineering projects for quality control. Pioneer Drilling used Mobile drill rigs with down hole hammers and would run them down inside of the auger above the sampler, even in ground water. Gene would ask them to stem the hammer above the water, but most would not have the proper equipment or refused to do so.

2R Drilling had the 2nd CME drill rig in Southern California. A regular torque CME 55 4x4 with a cathead and rope above auger safety hammer. He hired experienced drillers for the first year and went out with them to learn to drill, so he could fill in when they needed. He never went back to engineering. He was soon getting calls from many other engineering companies that wanted to hire him to do their drilling for their projects as well.

Gene's business partner at 2R Engineering was Mike Capik. Mike was an excellent golfer and he had golfing friends high up in the Mission Viejo Company. In 1980, the Mission Viejo Company wanted to establish their own soils division. They inquired with 2R Engineering to purchase it, but they didn't want 2R Drilling. Gene didn't want to go to work at the Mission Viejo Company. He liked the drilling business; less headaches,

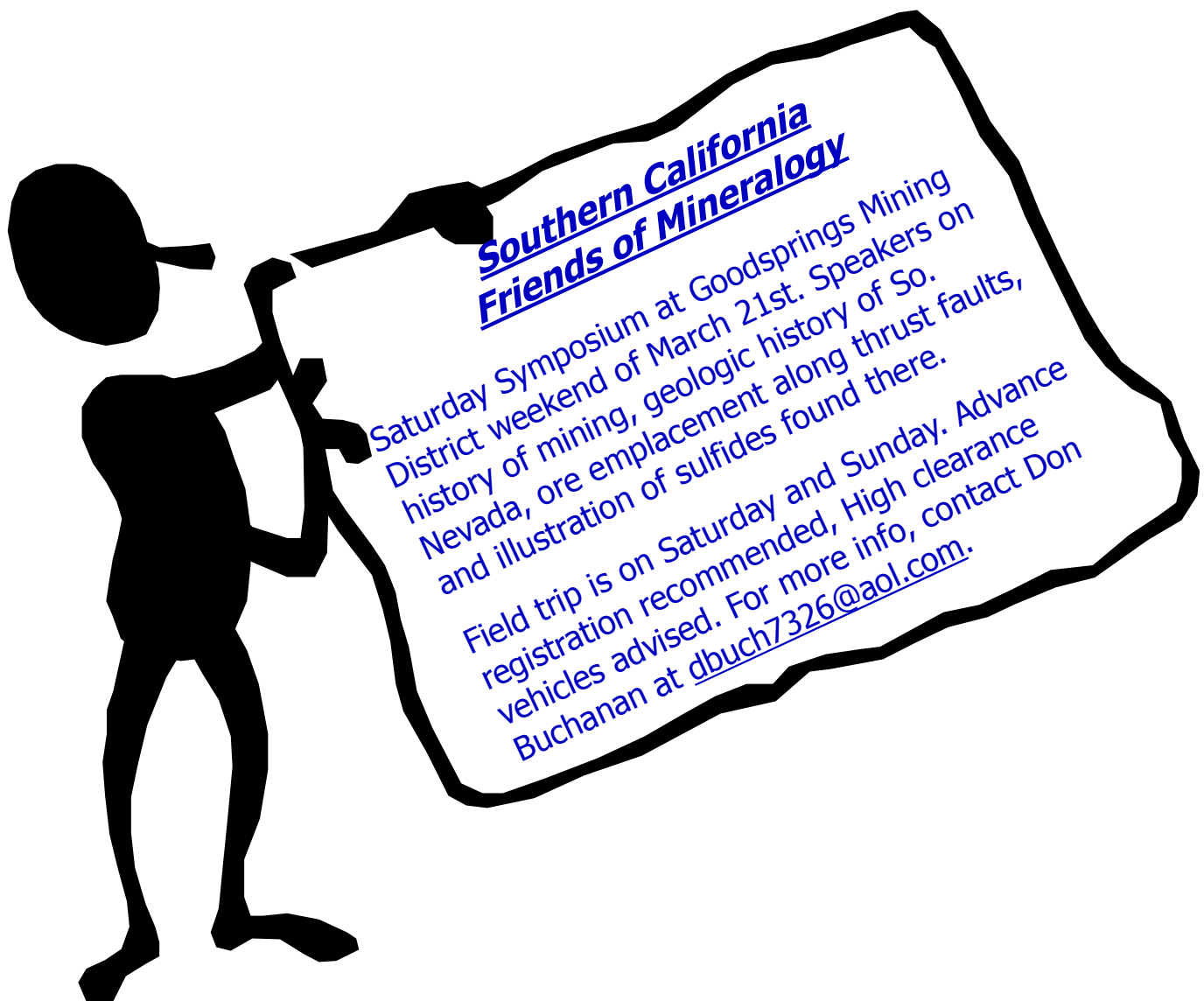
*(Continued on page 2)*

(Continued from page 1)

better money (at least back at that time). Mike and Gene decided that they would split up the businesses. Sell 2R Engineering to another interested Engineer, a Geologist and one of of 2R Engineering employees. Gene retained 2R Drilling and Mike ended up going to the Mission Viejo company to run the Mission Viejo Company's new soils division - the Jack G. Raub Company - who kept 2R Drilling very busy for many years as Mission Viejo was being built.

In 1982, Gene's son Brian Serl reluctantly came to work on the drill rig during the summer after his freshman year of college when Gene's helper did not show up to work one early morning. He never went back to college. It was good money at the time, and he had a truck payment and a girlfriend....

In 2001, Gene retired and sold 2R Drilling to Brian. Currently, 2R Drilling has six drill rigs: three 2-wheel drive CME 75's, one 4x4 CME 75, and two rubber track mounted CME 75's. The company has capabilities of performing hollow stem auger, mud rotary, HQ rock coring, CME continuous sampler system, and pitcher tube sampling as well as support abilities including a hot mix asphalt mixer, grout trailer and other support equipment. 99% of our drilling is for geotechnical purposes, most of which are for liquefaction studies with capabilities to meet client's needs by drilling above and below the water table to get quality soil samples.



## Upcoming Meetings/Events

### Rock & Gem Shows—Various locations

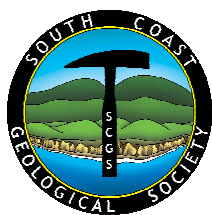
Various rock and mineral shows will be throughout So. California. To find one near you, visit [www.rockngem.com/showdates.asp](http://www.rockngem.com/showdates.asp)

### AEG—So. California Chapter Meeting



The meeting details for the next meeting for the AEG-Southern California Chapter is to be announced. For more info., visit the So. California Chapter at [www.aegsc.org/calendar/](http://www.aegsc.org/calendar/).

### South Coast Geological Society Meeting



Dr. Kim Bishop will be presenting a talk on the "Insights on the Mechanics of Long-Runout Rock Avalanches (Sturzstroms) from the anatomy of a Rock Avalanche Deposits at Old

Dad Mountain, Eastern Mojave Desert" on **Monday, February 2, 2015** at the DoubleTree Club by Hilton in Santa Ana, CA. For more info., visit SCGS on Facebook and/or [www.southcoastgeo.org](http://www.southcoastgeo.org).

### AEG—Inland Empire Section



Mr. Garreth Funning, professor of geological sciences at the University of California, Riverside, will be presenting a talk on **Wednesday, February 18, 2015**. For

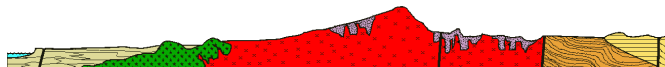
more info., visit [www.aegsc.org/chapters/inlandempire/index.php](http://www.aegsc.org/chapters/inlandempire/index.php).

### Los Angeles Basin Geological Society



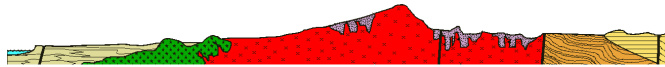
LABGS generally has their meetings on the fourth Thursday of each month. Visit their website for more info. ([www.labgs.org](http://www.labgs.org)).

### San Diego Assoc. of Geologists Field Trip



Mr. Chuck Houser will be presenting a talk on "Calcite" on **Wednesday, February 18, 2015**. For more info, visit [www.sandiegogeologists.org](http://www.sandiegogeologists.org)

### San Diego Assoc. of Geologists Field Trip



SDAG March and April meetings will be hosting student presentations on **Wednesday, March 18, 2015** and **Wednesday, April 15, 2015**. For more info, visit [www.sandiegogeologists.org](http://www.sandiegogeologists.org)

### Los Angeles Basin Geological Society



Groundwater Resources Association of California and LABGS will be having their joint session on **February 18-19, 2015** in Long Beach, CA. The topic will be "Oil, Gas, and Groundwater in California:

Wise Production and Protection of Our Valuable Natural Resources". Save the date! Visit their website for more info. ([www.labgs.org](http://www.labgs.org)).

## IGS Meeting Schedule

**March 5, 2015 (Thursday)**

TBD

**April 1, 2015 (Wednesday)**

TBD

**IGS MEETING LOCATION:**

**LSA Associates, Inc.**  
**1500 Iowa Ave, Suite 200**  
**Riverside, CA 92507**

**2015 IGS OFFICERS****Co-President**

Greg Johnson, LADPW  
 gjohnson@dpw.lacounty.gov  
 626.458.1741

**Co-President**

Rob Johnson, AMEC  
 rob.b.johnson@amec.com  
 951.369.8060

**Co-Vice President**

Jeff Fitzsimmons, John R. Byerly, Inc.  
 geojeff08@att.net  
 909.877.1324

**Co-Vice President**

Debbie Kunath, Consulting Geologist  
 Debbie\_Kunath@ymail.com  
 760.885.0232

**Treasurer**

Margaret Gooding, LSA Associates  
 Margaret.gooding@lsa-assoc.com  
 951.781.9310 x279

**Secretary**

Dixie Lass, Retired  
 Dixie.lass@att.net  
 951.784.2168

**Membership**

Steven E. Mains, Watermaster  
 Support Services  
 watermains@aol.com  
 951.780.5636

**Newsletter Editor**

Shelby Barker, AECOM  
 shelby.barker@aecom.com  
 760.680.0389

**Web Mistress**

Marina West, Bighorn Desert View  
 Water Agency  
 wells.out.west@gmail.com  
 760.910.3264

**Web Master**

Ernie Roumelis, AKW Geotechnical  
 eroumelis@verizon.net  
 951.265.9849