

Inland Geological Society

September 2014

Newsletter of the Inland Geological Society

Volume 30 No. 9

This Meeting:
Wednesday,
Sept 3rd

Time:
Social: 6:00pm
Dinner: 7:00pm
Lecture: 7:30pm

Location:
LSA Associates
1500 Iowa Ave
Suite 200
Riverside, CA
92507
(Map on Pg. 4)

Coming to
Dinner?
Please RSVP:
By Friday 8/29
(951) 784-2168
dixie.lass@att.net

In this Issue:

- September Speaker – Scott Eliason 1-2
- Upcoming Events/IGS Meeting Schedule..... 3
- Current IGS Officers 3
- **LSA MEETING LOCATION MAP** 4

September Speaker:

Scott Eliason

Mountain Top District Botanist, San Bernardino National Forest, Big Bear, CA

Carbonate Endemic Plants of the San Bernardino Mountains: Management Challenges for Species Conservation and Mineral Development

Abstract

There are four plant species that grow only on carbonate-rich soils of the northeastern San Bernardino Mountains. These species are listed under the Endangered Species Act due to their very narrow geographic distribution, and because large portions of this distribution coexists with large scale calcium carbonate mining. The Forest Service manages surface uses of the National Forest land, including the surface effects of mining development on public land. The Forest Service also is required to comply with provisions of the Endangered Species Act that apply to all federal agencies. This inherent land and resource management conflict drove the development of the Carbonate Habitat Management Strategy during the early 2000's. Multiple agencies and interests participated in the development of this strategy, and in the eleven years since the strategy there has been slow but sure progress in implementing the strategy. With two

(Continued on page 2)

(Continued from page 1)

large proposals for mine development and expansion being review by the SBNF currently, the Carbonate Habitat Management Strategy is being put to its greatest test to date.

BIOGRAPHY:

Scott Eliason is the Mountaintop District Botanist for the San Bernardino National Forest, stationed in Big Bear. Since coming to Big Bear in 1999, Scott has been working on rare plant conservation and management ranging from long term strategic planning to project level planning and analysis. The San Bernardino Mountains support a disproportionately high diversity of plant species in general and also high numbers of rare species. There are fifteen plant species listed as threatened or endangered under the federal Endangered Species Act that occur on the San Bernardino National Forest, and over one hundred sensitive plant species that receive some protection under Forest Service management. These numbers are higher than any National Forest in the nation. One of the highlights of many stimulating challenges in Scott's career working for the Forest Service has been to work on how best to conserve a group of plants endemic to carbonate soils (derived from limestone and other calcium carbonate rich rock types), in the context of calcium carbonate mining on the north slope of the San Bernardino Mountains. Scott worked on the Carbonate Habitat Management Strategy, which was finalized in 2003, and continues to work through the ups and downs of implementing the strategy.

Prior to his career with the Forest Service, Scott received Bachelor and Master's degrees in Ecology (University of California at San Diego and San Diego State University), worked professionally in ecological restoration, as a freelance botanist, and as a botanist for the Fish and Wildlife Service. Scott grew up in Pasadena and has lived in California all his life.

SPEAKERS WANTED

**We are still looking for more speakers
for future meetings.**

**Students of all levels are encouraged
to participate!**

**Contact Jeff Fitzsimmons or Steve Mains
to get your name in the schedule!**

Upcoming Meetings/Events

Rock & Gem Shows—Various locations

Various rock and mineral shows will be throughout So. California. To find one near you, visit www.rockngem.com/showdates.asp

AEG—So. California Chapter Meeting



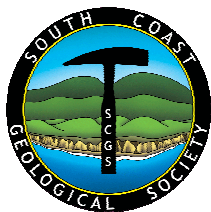
The meeting details for the next meeting for the AEG-Southern California Chapter is to be announced. For more info., visit the So. California Chapter at www.aegsc.org/calendar/.

AEG—Inland Empire Section



AEG—Inland Empire Section meeting details have not been announced. For more info., visit www.aegsc.org/chapters/inlandempire/index.php.

South Coast Geological Society Meeting



Dr. Tanya Atwater, Emeritus Professor at UC Santa Barbara, will be giving a talk on the "Brief Plate Tectonic History of Southwestern U.S. and how that History is reflected in the rocks of the

White Mountains". For more info., visit SCGS on Facebook or www.southcoastgeo.org.

Los Angeles Basin Geological Society



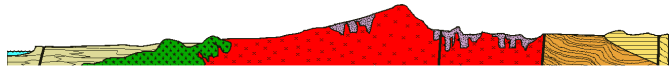
LABGS generally has their meetings on the fourth Thursday of each month. Visit their website for more info. (www.labgs.org).

San Diego Assoc. of Geologists Field Trip



Jill Krezoski will be presenting a talk on "The Mineralogy of Mars" on **Wednesday, September 17, 2014**. For more info, visit www.sandiegogeologists.org

San Diego Assoc. of Geologists Field Trip



SDAG will be having a field trip in lieu of a meeting for October. For more info, visit www.sandiegogeologists.org

GRA 23rd Annual Conference and Meeting

Groundwater Resources Association of California will be holding their 23rd Annual Conference and Meeting, titled "2014—A Year of Groundwater" on **Oct. 15-16, 2014** in Sacramento, CA. They are currently calling for abstracts. For more info, visit www.grac.org/bsarc14.asp

IGS Meeting Schedule

October 2, 2014 (Thursday)

TBA

November 5, 2014 (Wednesday)

TBA

December 4, 2014 (Thursday)

Taylor Waters, Earth Forensics
A Career in Environmental Science - From 1985 to 2014

IGS MEETING LOCATION:

LSA Associates, Inc.
1500 Iowa Ave, Suite 200
Riverside, CA 92507

**2014 IGS OFFICERS****Co-President**

Greg Johnson, LADPW
 gjohnson@dpw.lacounty.gov
 626.458.1741

Co-President

Rob Johnson, AMEC
 rob.b.johnson@amec.com
 951.369.8060

Co-Vice President

Jeff Fitzsimmons, John R. Byerly, Inc.
 geojeff08@att.net
 909.877.1324

Co-Vice President

Debbie Kunath, Consulting Geologist
 Debbie_Kunath@ymail.com
 760.885.0232

Treasurer

Margaret Gooding, LSA Associates
 Margaret.gooding@lsa-assoc.com
 951.781.9310 x279

Secretary

Dixie Lass, Retired
 Dixie.lass@att.net
 951.784.2168

Membership

Steven E. Mains, Watermaster
 Support Services
 watermains@aol.com
 951.780.5636

Newsletter Editor

Shelby Barker, AECOM
 shelby.barker@aecom.com
 760.680.0389

Web Mistress

Marina West, Bighorn Desert View
 Water Agency
 wells.out.west@gmail.com
 760.910.3264

Web Master

Ernie Roumelis, AKW Geotechnical
 eroumelis@verizon.net
 951.265.9849