

Inland Geological Society

November 2014

Newsletter of the Inland Geological Society

Volume 30 No. 12

This Meeting:
Thursday,
December 4th

Time:
Social: 6:00pm
Dinner: 7:00pm
Lecture: 7:30pm

Location:
LSA Associates
1500 Iowa Ave
Suite 200
Riverside, CA
92507
(Map on Pg. 4)

Coming to
Dinner?
Please RSVP:
By Monday 12/1
(951) 784-2168
dixie.lass@att.net

In this Issue:

- December Speaker – Taylor Waters 1-2
- Upcoming Events/IGS Meeting Schedule..... 3
- Current IGS Officers 3
- **LSA MEETING LOCATION MAP** 4

December Speaker:

Taylor Waters, PG

Project Manager, Department of Defense and Department of Energy Programs

Life as an Environmental Consultant

Abstract

Do you know what to expect when you start a career in environmental consulting? Mr. Taylor Waters has working in environmental consulting since his college days at California State University Long Beach. He began his career as a part time field technician with one of the premier environmental companies of the 80's and 90's – International Technology Corporation (IT Corp). This presentation is meant as a primer for college students who are considering environmental consulting, but don't really know what to expect.

The presentation will cover the following: 40-hour HAZWOPER training, drilling, soil sampling, groundwater well installation and sampling, office politics, proposal writing, budgeting, work plans, reports, agency correspondence, horrible bosses, traveling, sampling on the beach, annual reviews, jumping to another company, and the coolest place he was sent to during his 25 year career – HINT: it was 900 feet wide by 1200 feet deep.

BIOGRAPHY: Taylor Waters is a Professional Geologist in the state of California with over 25 years of experience in remediation contracting and environmental consulting. He has worked as a task manager and project manager for Department of Defense and Department of Energy programs on several military bases in California, Arizona and Washington in addition to municipal and commercial clients located mainly in the southern California marketplace.

Upcoming Meetings/Events

Rock & Gem Shows—Various locations

Various rock and mineral shows will be throughout So. California. To find one near you, visit www.rockngem.com/showdates.asp

AEG—So. California Chapter Meeting



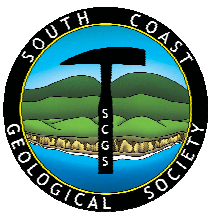
The meeting details for the next meeting for the AEG-Southern California Chapter is to be announced. For more info., visit the So. California Chapter at www.aegsc.org/calendar/.

AEG—Inland Empire Section



Mr. Thomas Dean will be presenting a talk on the "Effects of Debris Flow and Superposition of Seasonal Spring Flow on Multi-Year Variable Spring Base Flow: Conditions at Ruby Springs, OMYA Inc.'s White Knob Mine, Lucerne, CA" on **Wednesday, December 10, 2014**. For more info., visit www.aegsc.org/chapters/inlandempire/index.php.

South Coast Geological Society Meeting



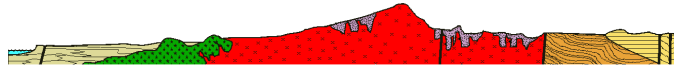
SCGS has not announced their December meeting details. For more info., visit SCGS on Facebook and/or www.southcoastgeo.org.

Los Angeles Basin Geological Society



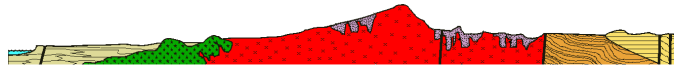
LABGS will not have a December meeting. Visit their website for more info. (www.labgs.org).

San Diego Assoc. of Geologists Field Trip



Mr. Tom Demere will be presenting a talk on "The recovery of late Oligocene vertebrate fossils in south Carlsbad: Implications for the geologic history of Paleogene strata in northern San Diego County" on **Wednesday, December 17, 2014**. For more info, visit www.sandiegogeologists.org

San Diego Assoc. of Geologists Field Trip



Ms. Renee Deutsch will be presenting a talk on "The Impossible Landslide (Carrizo Gorge's 1932 Goat Canyon Disaster)" on **Wednesday, January 21, 2014**. For more info, visit www.sandiegogeologists.org

AEG—Inland Empire Section



Mr. Desmond Chung will be presenting a talk on "Dirt Can Hurt: Utilizing Flexible Solutions" on **Wednesday, January 21, 2014**. For more info., visit www.aegsc.org/chapters/inlandempire/index.php.

IGS Meeting Schedule

January 8, 2014 (Thursday)

Dr. Nigel Hughes, Department of Earth Sciences, University of California, Riverside
Mt. Everest: A geological biography

February 5, 2014 (Thursday)

TBD

IGS MEETING LOCATION:

LSA Associates, Inc.
1500 Iowa Ave, Suite 200
Riverside, CA 92507

**2014 IGS OFFICERS****Co-President**

Greg Johnson, LADPW
 gjohnson@dpw.lacounty.gov
 626.458.1741

Co-President

Rob Johnson, AMEC
 rob.b.johnson@amec.com
 951.369.8060

Co-Vice President

Jeff Fitzsimmons, John R. Byerly, Inc.
 geojeff08@att.net
 909.877.1324

Co-Vice President

Debbie Kunath, Consulting Geologist
 Debbie_Kunath@ymail.com
 760.885.0232

Treasurer

Margaret Gooding, LSA Associates
 Margaret.gooding@lsa-assoc.com
 951.781.9310 x279

Secretary

Dixie Lass, Retired
 Dixie.lass@att.net
 951.784.2168

Membership

Steven E. Mains, Watermaster
 Support Services
 watermains@aol.com
 951.780.5636

Newsletter Editor

Shelby Barker, AECOM
 shelby.barker@aecom.com
 760.680.0389

Web Mistress

Marina West, Bighorn Desert View
 Water Agency
 wells.out.west@gmail.com
 760.910.3264

Web Master

Ernie Roumelis, AKW Geotechnical
 eroumelis@verizon.net
 951.265.9849